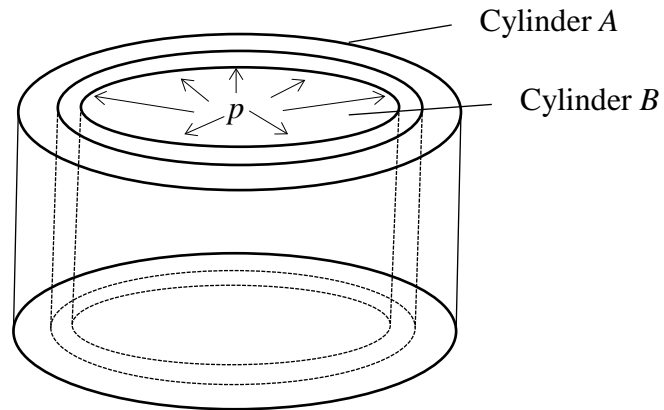


A pressure vessel that consists of two hollow cylinders is shown in the figure. The pressure vessel is subjected to an internal pressure  $p$ . If only one cylinder is subjected to  $p$  along, the reliabilities of cylinders  $A$  and  $B$  are 0.999 and 0.998, respectively. If both cylinders operate as shown in the figure, the probability that either cylinder fails is 0.001, and the probability that both of the cylinders work properly is 0.99. If one cylinder fails, the other cylinder will continue to operate and resist the entire pressure, what is the reliability of the pressure vessel?



Solution

$$R = 0.992$$